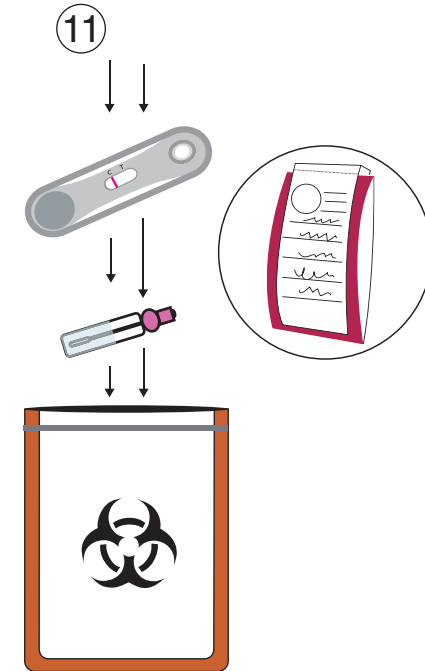


\*Any visible line regardless of intensity in the test area (T) should be viewed as a positive result.



6. Remove the clear cap from the tip of the diluent tube. Break off the tip and discard. The tube now becomes a dropper for dispensing the sample onto the test device.

7. Invert the tube to a 45 degree angle and SLOWLY add 4 to 5 drops to the sample well. DO NOT add more than 5 drops. Return the clear cap back to the dropper and set it to the side.

8. Set a timer and allow a maximum of 15 minutes before interpreting the results. You may see results in as little as 3 minutes. DO NOT interpret the results after 30 minutes.

9. As the test begins to work, a red-dish color will begin moving across the result window. A line should always appear at the control line (C). This is an indication that the test is working correctly.

10. The windows above represent potential results. A weak positive, regardless of its intensity, should be considered positive. Invalids are rare but occur when tests are out-dated or exposed to extreme weather and should be re-run.

11. With your results collected, return all items back to the original zip-lock foil pouch. Zip the pouch closed, complete the chain of custody label, remove the adhesive backing and attach it over the pouch. Pouch is now ready for the lab.

# BADD™

## INSTRUCTION SHEET

### Test Kits

- ANTH-KIT
- RIC-KIT
- BOT-KIT
- PLA-KIT
- SEB-KIT
- TUL-KIT

# ADVNT

BIOTECHNOLOGIES

### DESCRIPTION

BADD is a single-use, Hand-Held Assay (HHA) used for the rapid, qualitative detection of a specific, single biothreat agent such as Anthrax, Ricin Toxin, Botulinum Toxin, Y. pestis, SEB, or Tularemia.

### IMPORTANT INFORMATION

Please review complete instructions prior to use. Use only the materials supplied in this kit.

Always use proper PPE or refer to your organization's written protocol.

Humidity levels above 80% can slow results. Do not use in direct rain.

Device works best in temperatures between 38 and 90 degrees Fahrenheit or 4 to 32 degrees Celsius.

Maximum temperature range: 34 to 120 degrees Fahrenheit 1 to 49 degrees Celsius.

DO NOT open the inner white pouch until you are ready to perform the evaluation.

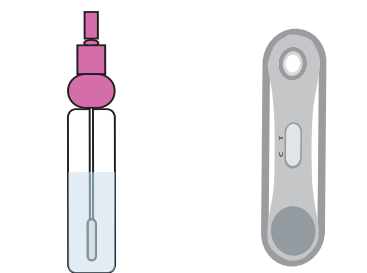
### CONTACT US

Advnt Biotechnologies LLC, USA  
Toll Free 888-223-3269  
www.advntbiotechnologies.com

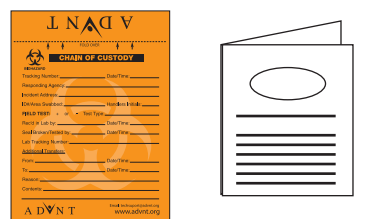
Technical information can also be found at:  
www.advntbiotechnologies.com

BADD and the BADD logo are registered trademarks of Advnt Biotechnologies. This brochure and contents © Advnt Biotechnologies 2011.

### TEST KIT EQUIPMENT

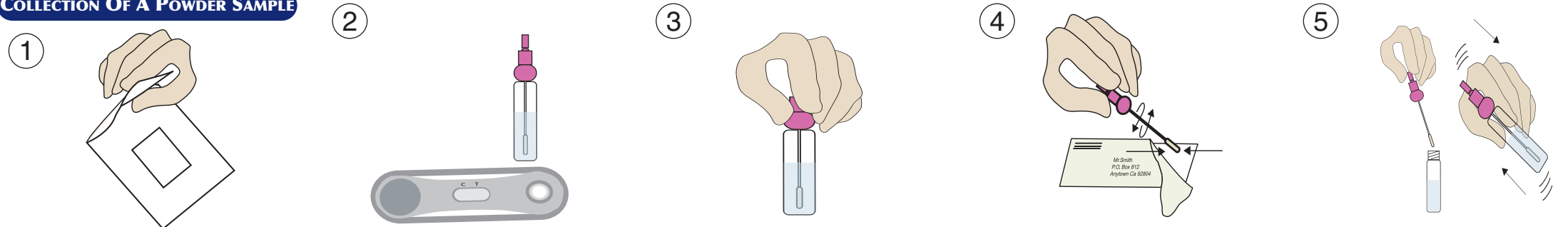


DROPPER/SWAB DILUENT TUBE      POUCHED TEST DEVICE



CHAIN OF CUSTODY LABEL      FOLDED INSTRUCTION INSERT

### COLLECTION OF A POWDER SAMPLE



1. Tear open the inner white pouch to remove the test device. Place the device and the diluent tube onto a flat, horizontal surface in front of you.

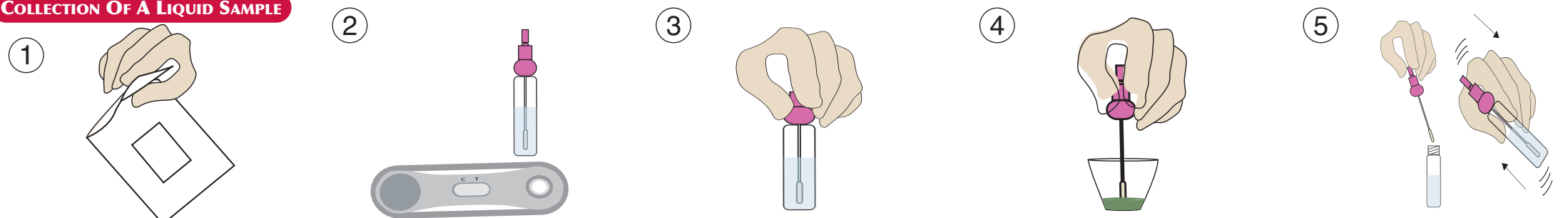
2. The test device should be placed in front of you with the "C" and "T" towards the top and the small round sample well to your right as shown above.

3. Unscrew the cap from the diluent tube. While removing the swab, rub the foam tip against the inside walls to extract excess liquid then remove swab completely.

4. Swab the suspect material or contaminated area carefully. Collect as much material as possible by swirling the swab tip slowly.

5. Return the swab and collected sample back to the diluent tube. Tighten the cap and shake gently for approximately 5 seconds. Please proceed to step 6.

### COLLECTION OF A LIQUID SAMPLE



1. Tear open the inner white pouch to remove the test device. Place the device and the diluent tube onto a flat, horizontal surface in front of you.

2. The test device should be placed in front of you with the "C" and "T" towards the top and the small round sample well to your right as shown above.

3. Unscrew the cap from the diluent tube. While removing the swab, rub the foam tip against the inside walls to extract excess liquid then remove swab completely.

4. Place the absorbent end of the swab into the suspect liquid and swirl for 5 seconds.

5. Return the swab and collected sample back to the diluent tube. Tighten the cap and shake gently for approximately 5 seconds. Please proceed to step 6.